



*Get the best products from the best names in the business—
Amerex, Badger, Fireboy-Xintex, Fire-Lite Alarms,
JL Industries, Kidde Fire Systems, and VESDA to name a few.*



Get A Multi-Purpose Advantage at Brooks!

Badger™ ADVANTAGE MULTI-PURPOSE EXTINGUISHERS are made to handle easier and be recharged quicker, thanks to a larger neck opening. The square thread design allows the valve to be removed and installed quickly. Heavy-duty plated steel siphon tubes are threaded for a more secure connection and the engineer grade polymer hose strap won't scratch the cylinder. Larger pull pin and handles are easy to operate—even with work gloves. Depending on the extinguisher size and fire type, **Advantage Fire Extinguishers** can be used in vehicles, homes, schools, offices, and more.

P/N	SHIP. WEIGHT	UNIT HEIGHT	UNIT WIDTH	SHELL DIAMETER	HEAVY-DUTY BRACKET P/N
21007865B	5 lbs	15"	5 1/2"	3 1/4"	-
21007866B	9 1/2 lbs	16 7/16"	7 1/2"	4 1/2"	5DC
21008936B	9 1/2 lbs	16 7/16"	7 1/2"	4 1/2"	5DC
21007867B	17 1/2 lbs	19 5/8"	8"	5 3/16"	5HB
21007868B	31 1/2 lbs	21 3/4"	9"	7 1/8"	-

P/N	DESCRIPTION	UL RATING
21007865B	2 1/2 lb Advantage w/ Vehicle Bracket	1A:10B:C
21007866B	5 lb Advantage w/ Wall Hook	3A:40B:C
21008936B	5 lb Advantage w/ Vehicle Bracket	3A:40B:C
21007867B	10 lb Advantage w/ Wall Hook	4A:60B:C
21007868B	20 lb Advantage w/ Wall Hook	6A:80B:C



21007865B

BADGER™ FIRE EXTINGUISHERS

Badger's™ STORED PRESSURE MULTI-PURPOSE FIRE EXTINGUISHERS are extremely versatile. They will tackle the majority of fire risks found in most commercial, industrial, and domestic environments. They are suitable for use on Class A, B, and C fires and mount on any surface with the wall hook supplied, or, if preferred, can be supplied with optional vehicle bracket. USCG approved with bracket listed on the UL label.

P/N	SHIP. WEIGHT	UNIT HEIGHT	UNIT WIDTH	SHELL DIAMETER	HEAVY-DUTY BRACKET P/N
22430B	5 3/8 lbs	14 7/8"	5 1/2"	3"	-
23384B	5 1/2 lbs	14 7/8"	5 1/2"	3"	-
22435B	9 3/8 lbs	15 1/4"	7 1/4"	4 1/4"	5DC
22486B	10 lbs	15 1/4"	7 1/4"	4 1/4"	5DC
23390B	10 3/8 lbs	15 1/4"	7 1/4"	4 1/4"	5DC
22603B	17 lbs	18 15/16"	7 3/4"	5 1/4"	5HB
23396B	18 lbs	18 15/16"	7 3/4"	5 1/4"	5HB
22682B	33 lbs	21 1/8"	9 1/4"	7 1/4"	15HBL
23497B	33 lbs	21 1/8"	9 1/4"	7 1/4"	15HBL

P/N	DESCRIPTION	UL RATING
22430B	2 1/2 lb w/ Vehicle Bracket	1A:10B:C
23384B	2 1/2 lb Brass Valve w/ Vehicle Bracket	1A:10B:C
22435B	5 lb w/ Wall Hook	3A:40B:C
22486B	5 lb w/ Vehicle Bracket	3A:40B:C
23390B	5 lb Brass Valve w/ Wall Hook	3A:40B:C
22603B	10 lb w/ Wall Hook	4A:80B:C
23396B	10 lb Brass Valve w/ Wall Hook	4A:80B:C
22682B	20 lb w/ Wall Hook	6A:120B:C
23497B	20 lb Brass Valve w/ Wall Hook	6A:120B:C



22430B



22682B



1 FIRE EXTINGUISHERS & CHEMICAL



23476B

Badger's™ REGULAR DRY CHEMICAL STORED PRESSURE FIRE EXTINGUISHERS

are specifically designed to meet the needs of industrial and commercial premises where there is a flammable liquid risk. They are cost effective to maintain and offer good value and excellent performance. Suitable for use on Class B and C fires and mount on any surface with wall hook, forked hanger, or an optional vehicle bracket. USCG approved with bracket listed on the UL label.

P/N	SHIP. WEIGHT	UNIT HEIGHT	UNIT WIDTH	SHELL DIAMETER	HEAVY-DUTY BRACKET P/N
23471B	5 ³ / ₈ lbs	14 ⁷ / ₈ "	5 ¹ / ₂ "	3"	-
23476B	10 ¹ / ₂ lbs	15 ¹ / ₄ "	7 ¹ / ₄ "	4 ¹ / ₄ "	5DC
23781B	18 lbs	19 ¹ / ₈ "	8 ¹ / ₈ "	5 ¹ / ₄ "	5HB
23482B	33 lbs	21 ¹ / ₈ "	9 ¹ / ₄ "	7 ¹ / ₄ "	15HBL

P/N	DESCRIPTION	UL RATING
23471B	2 ³ / ₄ lb Brass Valve w/ Vehicle Bracket	10B:C
23476B	5 lb Brass Valve w/ Wall Hook	40B:C
23781B	10 lb Brass Valve w/ Wall Hook	60B:C
23482B	20 lb Brass Valve w/ Wall Hook	120B:C



23488B



23778B

Badger's™ PURPLE K DRY CHEMICAL STORED PRESSURE FIRE EXTINGUISHERS

are designed for use on high hazard types of Class B and C fires. Purple K is generally superior to other dry chemicals on Class B fires, making these extinguishers ideal for use in industrial and commercial premises where a flammable liquid or gas fire risks exist. USCG approved with bracket listed on the UL label.

P/N	SHIP. WEIGHT	UNIT HEIGHT	UNIT WIDTH	SHELL DIAMETER	HEAVY-DUTY BRACKET P/N
23485B	5 ⁷ / ₈ lbs	14 ⁷ / ₈ "	5 ¹ / ₂ "	3"	-
23488B	10 ³ / ₈ lbs	15 ¹ / ₄ "	7 ¹ / ₄ "	4 ¹ / ₄ "	5DC
23778B	17 lbs	18 ¹⁵ / ₁₆ "	7 ³ / ₄ "	5 ¹ / ₄ "	5HB
23495B	32 lbs	21 ¹ / ₈ "	9 ¹ / ₄ "	7 ¹ / ₄ "	15HBL

P/N	DESCRIPTION	UL RATING	EACH
→ 23485B	2 ¹ / ₂ lb Brass Valve w/ Vehicle Bracket	10B:C	
→ 23488B	5 lb Brass Valve w/ Wall Hook	30B:C	
→ 23778B	10 lb Brass Valve w/ Wall Hook	80B:C	
→ 23495B	20 lb Brass Valve w/ Wall Hook	120B:C	

Badger's™ EXTRA HIGH FLOW DRY CHEMICAL

EXTINGUISHERS feature a steel cylinder, internal siphon tube, and heavy-duty chrome-plated brass valves. These models, available in ABC and Purple K, have dry chemical agent discharge rates exceeding the minimum one-pound-per-second recommendation of NFPA for pressure, three dimensional, and obstacle fires. The ultimate protection against Class B hazards. USCG approved with bracket listed on the UL label. Meets D.O.T. requirements.

P/N	SHIP. WEIGHT	UNIT HEIGHT	UNIT WIDTH	SHELL DIAMETER	HEAVY-DUTY BRACKET P/N
21006158B	18 lbs	19 ¹ / ₈ "	8 ¹ / ₈ "	5 ¹ / ₄ "	5HB
21006160B	33 lbs	21 ¹ / ₈ "	9 ¹ / ₄ "	7 ¹ / ₄ "	15HBL
21006159B	18 lbs	19 ¹ / ₈ "	8 ¹ / ₈ "	5 ¹ / ₄ "	5HB
21006161B	33 lbs	21 ¹ / ₈ "	9 ¹ / ₄ "	7 ¹ / ₄ "	15HBL

P/N	DESCRIPTION	UL RATING
21006158B	10 lb ABC High Flow w/ Wall Hook	1A:20B:C
21006160B	20 lb ABC High Flow w/ Wall Hook	4A:60B:C
21006159B	10 lb Purple K High Flow w/ Wall Hook	20B:C
21006161B	20 lb Purple K High Flow w/ Wall Hook	60B:C



21006158B



Badger's™ HALOTRON I™ FIRE EXTINGUISHERS are an environmentally acceptable Halon alternative and designed to meet any special hazard where **Halon 1211** was specified and used. **Halotron I** is ideal for protecting office computer areas, data storage, telecommunications, and high-tech clean rooms. **Halotron I** meets EPA approval and is the government specified clean agent alternative. USCG approved with bracket listed on the UL label, except for model **24563B**.

P/N	SHIP. WEIGHT	UNIT HEIGHT	UNIT WIDTH	SHELL DIAMETER	HEAVY-DUTY BRACKET P/N
24563B	6 ⁷ / ₈ lbs	14 ⁷ / ₈ "	6 ¹ / ₈ "	3"	-
24567B	10 ³ / ₈ lbs	15 ¹ / ₄ "	6 ¹ / ₈ "	4 ¹ / ₄ "	5DC
23082B	23 lbs	16 ³ / ₁₆ "	8 ¹ / ₃ "	7 ¹ / ₄ "	15HBL
23097B	26 ¹ / ₂ lbs	17 ¹ / ₈ "	8 ³ / ₄ "	7 ¹ / ₄ "	15HBL

P/N	DESCRIPTION	UL RATING
24563B	2 ¹ / ₂ lb Halotron I w/ Vehicle Bracket	2B:C
24567B	5 lb Halotron I w/ Wall Hook	5B:C
23082B	11 lb Halotron I w/ Wall Hook	1A:10B:C
23097B	15 ¹ / ₂ lb Halotron I w/ Wall Hook	2A:10B:C



Badger's™ CARBON DIOXIDE (CO₂) FIRE EXTINGUISHERS give fast, safe, and effective protection against fires involving electrical equipment and flammable liquids. They are generally suited for use indoors, making them ideal for today's office environments. The cylinders are manufactured from lightweight high-grade aluminum. They are highly effective, easy to use, and leave no messy residue to clean up. USCG approved with bracket listed on the UL label.

P/N	SHIP. WEIGHT	UNIT HEIGHT	UNIT WIDTH	SHELL DIAMETER	HEAVY-DUTY BRACKET P/N
21111B	15 lbs	17"	8 ¹ / ₂ "	5 ¹ / ₄ "	5HB
21106B	30 lbs	19 ⁵ / ₁₆ "	10 ⁷ / ₈ "	6 ⁷ / ₈ "	15HB
21103B	40 lbs	26"	10 ⁷ / ₈ "	6 ⁷ / ₈ "	15HB
21096B	51 lbs	26"	12"	8"	20HB
25078B	15 lbs	17"	8 ¹ / ₂ "	5 ¹ / ₄ "	5HB

P/N	DESCRIPTION	UL RATING
21111B	5 lb Carbon Dioxide	5B:C
21106B	10 lb Carbon Dioxide	10B:C
21103B	15 lb Carbon Dioxide	10B:C
21096B	20 lb Carbon Dioxide	10B:C
→ 25078B	5 lb Carbon Dioxide (Non-Magnetic)	5B:C



Badger's™ UNIVERSAL ULTRA FOAM EXTINGUISHERS are effective on Class A common combustibles as well as both hydrocarbon and polar solvent types of Class B flammable liquids, so they eliminate the application guesswork associated with other foams. The unique synthetic base of **Universal Ultra Foam** does not have any offensive odors, is non-toxic, environmentally friendly, biodegradable, and extremely simple to use and clean up.

P/N	SHIP. WEIGHT	UNIT HEIGHT	UNIT WIDTH	SHELL DIAMETER	HEAVY-DUTY BRACKET P/N
23697B	12 lbs	24 ¹ / ₂ "	8 ³ / ₄ "	7"	15HB

P/N	DESCRIPTION	UL RATING
23697B	2 ¹ / ₂ gal Foam	1A:30B
23691B	6lit Recharge	
23702B	2 ¹ / ₂ gal Recharge	



1 FIRE EXTINGUISHERS & CHEMICAL



25064B

The fire fighting power and user-friendly design of **Badger's™ WET CHEMICAL PORTABLE EXTINGUISHER** makes it the ideal choice for commercial restaurant applications. This stored pressure extinguisher has been designed to offer the very best portable fire protection available to supplement pre-engineered restaurant suppression systems. Units come fully charged.

P/N	SHIP. WEIGHT	UNIT HEIGHT	UNIT WIDTH	SHELL DIAMETER	HEAVY-DUTY BRACKET P/N
25064B	25 lbs	19 1/2"	8 3/4"	7"	15HB
P/N	DESCRIPTION		UL RATING		
25064B	6lit Wet Chemical		K		
AC100	6lit Recharge Jug, Pkg/2				



DDP466521B



16888B

Badger's™ STORED PRESSURE WATER EXTINGUISHER

is ideal for common combustible materials, such as trash, wood, and paper. **Badger's** non-toxic, ozone-friendly, pressurized water fire extinguisher performs better, lasts longer, and is the number one choice for virtually all Class A-type hazards.

P/N	SHIP. WEIGHT	UNIT HEIGHT	UNIT WIDTH	SHELL DIAMETER	HEAVY-DUTY BRACKET P/N
16888B	8 lbs	24 3/4"	8 3/4"	7"	15HB
P/N	DESCRIPTION		UL RATING		
16888B	2 1/2 gal Water		2A		
792B	WP-61 Antifreeze Charge				

Badger™ BRIGADE CARBON DIOXIDE (CO₂)

CARTRIDGE OPERATED UNITS are the industry's most effective fire extinguisher of their kind. Available in ABC, BC, or PK, these units use carbon dioxide expellent gas and feature deep-drawn seamless steel (with corrosion-resistant cylinders) for maximum performance. USCG approved with bracket listed on the UL label. For use down to -40°F.

P/N	SHIP WEIGHT	UNIT HEIGHT	UNIT WIDTH	SHELL DIAMETER	HEAVY DUTY BRACKET P/N
DDP466521B	25 1/2 lbs	18 1/4"	9 1/2"	5 1/10"	466541B
DDP466523B	25 1/2 lbs	18 1/4"	9 1/2"	5 1/10"	466541B
466527B	45 1/2 lbs	23 3/8"	11 1/4"	6 1/4"	466542B
DDP466564B	45 1/2 lbs	23 3/8"	11 1/4"	6 1/4"	466542B
466528B	47 1/2 lbs	23 3/8"	11 1/4"	6 1/4"	466542B
466529B	46 1/2 lbs	23 3/8"	11 1/4"	6 1/4"	466542B
466533B	51 lbs	23 3/8"	12 1/4"	7 1/5"	466543B
466539B	55 lbs	23 3/8"	12 1/4"	7 1/5"	466543B
466534B	54 1/2 lbs	23 3/8"	12 1/4"	7 1/5"	466543B

P/N	DESCRIPTION	UL RATING
DDP466521B	10 lb ABC	4A:40B:C
DDP466523B	10 lb Purple K	60B:C
466527B	20 lb ABC	10A:60B:C
DDP466564B	20 lb ABC High Flow	2A:40B:C
466528B	20 lb BC	60B:C
466529B	20 lb Purple K	80B:C
466533B	30 lb ABC	10A:60B:C
466539B	30 lb BC	120B:C
466534B	30 lb Purple K	120B:C



466527B



466533B



When high-hazard fires demand a fast one-person response and exceptional performance, **Badger's™ WHEELED STORED PRESSURE DRY CHEMICAL EXTINGUISHERS** give you the power you need. Long-range discharge gives control over ordinarily out-of-reach fires and allows the operator to keep a safe distance from the fire source and smoke. The 50 lb unit provides cost effective, reliable fire protection, while the 125 lb models are USCG approved.

P/N	SHIP. WEIGHT	UNIT HEIGHT	UNIT WIDTH	UNIT DEPTH
20127B	140 lbs	46 ¹ / ₄ "	23"	23"
20180B	140 lbs	46 ¹ / ₄ "	23"	23"
20653B	300 lbs	58"	28"	39 ¹ / ₄ "
20684B	300 lbs	58"	28"	39 ¹ / ₄ "
DDP20677B	375 lbs	58"	28"	39 ¹ / ₄ "

P/N	DESCRIPTION	UL RATING
20127B	50 lb ABC	20A:160B:C
20180B	50 lb Purple K	160B:C
20653B	125 lb ABC	40A:240B:C
20684B	125 lb Purple K	240B:C
DDP20677B	150 lb BC	240B:C

Badger's™ WHEELED REGULATED RELEASE and DIRECT RELEASE DRY CHEMICAL EXTINGUISHERS are recommended for chemical or petroleum plants, storage facilities, airports, warehouses, construction sites, equipment depots, and other high-hazard locations where dry chemical is the preferred agent. Highly mobile, these units permit a single operator to extinguish fires that would normally require several operators with large portables. Pressure transfer models are USCG approved with bracket listed on the UL label.

P/N	SHIP. WEIGHT	UNIT HEIGHT	UNIT WIDTH	UNIT DEPTH	TYPE
DDP19900B	435 lbs	52"	27"	39"	Regulated Pressure
DDP19906B	440 lbs	52"	27"	39"	Regulated Pressure
DDP19915B	415 lbs	52"	27"	45"	Regulated Pressure

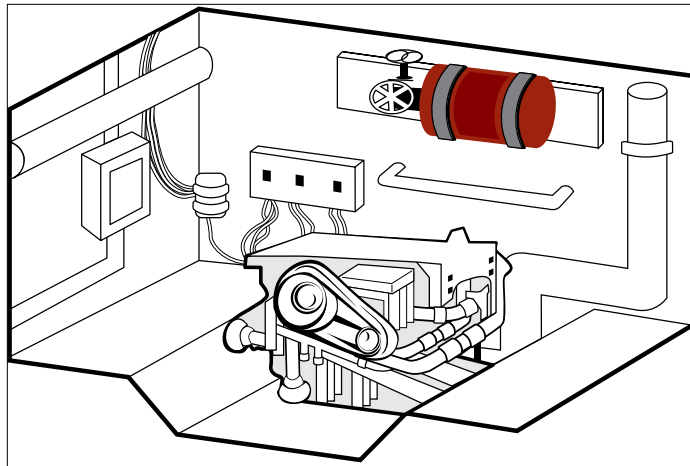
P/N	DESCRIPTION	UL RATING
DDP19900B	145 lb ABC	40A:240B:C
DDP19906B	150 lb BC	240B:C
DDP19915B	125 lb Purple K	240B:C

Badger's™ WHEELED CARBON DIOXIDE (CO₂) EXTINGUISHERS provide excellent protection for certain flammable liquids and energized electrical equipment. They can be operated by a single person, and the squeeze-grip control valve design allows for easy use. They are generally reserved for indoor use where wind and drafts will not disperse a discharge pattern. Carbon dioxide is a clean agent and leaves no residue.

P/N	SHIP. WEIGHT	UNIT HEIGHT	UNIT WIDTH	UNIT DEPTH
DDP22724B	271 lbs	52"	21 ¹ / ₂ "	33"
DDP22725B	446 lbs	52"	32"	33"

P/N	DESCRIPTION	UL RATING
DDP22724B	50 lb Carbon Dioxide	20B:C
DDP22725B	100 lb Carbon Dioxide	20B:C



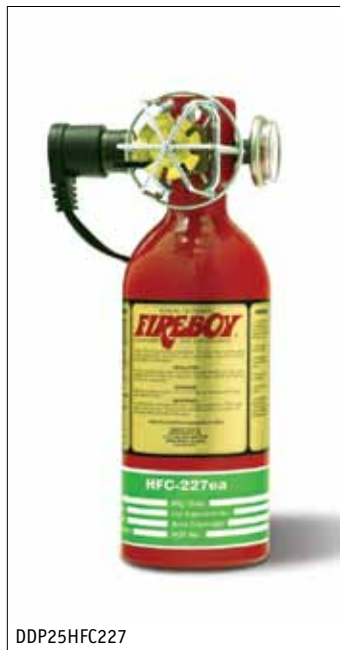


MOUNTED INSTALLATION

FIREBOY FIRE EXTINGUISHERS

Fireboy® HR-227 CLEAN AGENT FIRE EXTINGUISHER

SYSTEMS are the cleaner, safer, and more effective alternative to dry chemical portable fire extinguishers. They leave no residue or powdery mess behind and have a quicker fire-out time. When 175°F (79°C) is reached, the extinguisher will automatically discharge, releasing the clean agent gas to totally flood the entire space, smothering the fire. For occupied and unoccupied areas and most all marine applications. Approved for Class B fires.



DDP25HFC227



DDP500HFC227

P/N	DESCRIPTION	MAXIMUM VOLUME PROTECTED	SHELL DIAMETER	UNIT HEIGHT	GROSS WEIGHT	EACH
DDP25HFC227	HFC-227	25 cu. ft.	3.0"	9.1"	6 lbs	
DDP50HFC227	HFC-227	50 cu. ft.	3.0"	12.2"	8 lbs	
DDP75HFC227	HFC-227	75 cu. ft.	4.3"	11.9"	9 lbs	
DDP100HFC227	HFC-227	100 cu. ft.	4.3"	14.5"	13 lbs	
DDP125HFC227	HFC-227	125 cu. ft.	4.3"	14.5"	14 lbs	
DDP150HFC227	HFC-227	150 cu. ft.	5.1"	13.1"	16 lbs	
DDP175HFC227	HFC-227	175 cu. ft.	5.1"	15.5"	18 lbs	
DDP200HFC227	HFC-227	200 cu. ft.	5.1"	15.5"	19 lbs	
DDP225HFC227	HFC-227	225 cu. ft.	6.4"	14.7"	28 lbs	
DDP250HFC227	HFC-227	250 cu. ft.	6.4"	14.7"	29 lbs	
DDP275HFC227	HFC-227	275 cu. ft.	6.4"	14.7"	30 lbs	
DDP300HFC227	HFC-227	300 cu. ft.	7.2"	15.1"	35 lbs	
DDP325HFC227	HFC-227	325 cu. ft.	7.2"	15.1"	36 lbs	
DDP350HFC227	HFC-227	350 cu. ft.	7.2"	15.1"	37 lbs	
DDP375HFC227	HFC-227	375 cu. ft.	7.0"	18.8"	38 lbs	
DDP400HFC227	HFC-227	400 cu. ft.	7.0"	18.8"	39 lbs	
DDP450HFC227	HFC-227	450 cu. ft.	7.0"	18.8"	41 lbs	
DDP500HFC227	HFC-227	500 cu. ft.	7.0"	25.7"	47 lbs	
DDP550HFC227	HFC-227	550 cu. ft.	7.0"	25.7"	49 lbs	
DDP600HFC227	HFC-227	600 cu. ft.	7.0"	25.7"	51 lbs	
DDP650HFC227	HFC-227	650 cu. ft.	7.0"	25.7"	53 lbs	
DDP700HFC227	HFC-227	700 cu. ft.	10.0"	21.6"	77 lbs	
DDP750HFC227	HFC-227	750 cu. ft.	10.0"	21.6"	79 lbs	
DDP800HFC227	HFC-227	800 cu. ft.	10.0"	21.6"	82 lbs	
DDP850HFC227	HFC-227	850 cu. ft.	10.0"	21.6"	84 lbs	
DDP900HFC227	HFC-227	900 cu. ft.	10.0"	21.6"	86 lbs	
DDP950HFC227	HFC-227	950 cu. ft.	10.0"	21.6"	88 lbs	
DDP1000HFC227	HFC-227	1000 cu. ft.	10.0"	21.6"	90 lbs	
DDP1050HFC227	HFC-227	1050 cu. ft.	10.0"	21.6"	92 lbs	
DDP1100HFC227	HFC-227	1100 cu. ft.	10.0"	21.6"	95 lbs	
DDP1150HFC227	HFC-227	1150 cu. ft.	10.0"	21.6"	97 lbs	
DDP1200HFC227	HFC-227	1200 cu. ft.	10.0"	27.7"	105 lbs	
DDP1250HFC227	HFC-227	1250 cu. ft.	10.0"	27.7"	107 lbs	
DDP1300HFC227	HFC-227	1300 cu. ft.	10.0"	27.7"	109 lbs	
DDP1350HFC227	HFC-227	1350 cu. ft.	10.0"	27.7"	111 lbs	
DDP1400HFC227	HFC-227	1400 cu. ft.	10.0"	27.7"	113 lbs	
DDP1450HFC227	HFC-227	1450 cu. ft.	10.0"	27.7"	116 lbs	
DDP1500HFC227	HFC-227	1500 cu. ft.	10.0"	27.7"	118 lbs	



Fireboy® PANEL WARNING LIGHT features an attractive 2" round escutcheon plate with an adhesive back for easy panel mounting. The green warning lamp provides constant monitoring of the system, complying with USCG requirements for system approval.

P/N	DESCRIPTION
FBLKIT	Fire System Status Indicator Light w/ Panel



FBLKIT

Use this low-profile **Fireboy-Xintex® CO Sentinel CARBON MONOXIDE ALARM** on marine equipment. Once it detects dangerously high CO levels, the alarm sounds and it shuts down the generators automatically. If multiple alarms are connected, they will all sound. Controlled by a microprocessor, the alarm's time-weighted average carbon monoxide measurement process constantly monitors all CO levels, eliminating most false alarms. Made of durable polypropylene and listed to UL 2034 Marine Standards. 3.5"L x 2.4"W x 1.3"D.

P/N	DESCRIPTION
CMD4MD	Carbon Monoxide Alarm For Marine Use Only



CMD4MD

Fireboy® FIRE EXTINGUISHING SYSTEMS CABLES are for those who prefer the extra measure of control or for inspected vessels required to by USCG regulations. The normal mounting position of the manual discharge cable is at right angles to the panel for a straight-out pull.

P/N	DESCRIPTION
E42096	Manual Discharge Cable, 6'
E42098	Manual Discharge Cable, 8'
E420910	Manual Discharge Cable, 10'
E420912	Manual Discharge Cable, 12'
E420914	Manual Discharge Cable, 14'
E420916	Manual Discharge Cable, 16'
E420918	Manual Discharge Cable, 18'
E420920	Manual Discharge Cable, 20'
E420922	Manual Discharge Cable, 22'
DDPE420924	Manual Discharge Cable, 24'
E420926	Manual Discharge Cable, 26'
E420928	Manual Discharge Cable, 28'
E420930	Manual Discharge Cable, 30'



E420926

If fire breaks out aboard a diesel-powered vessel, continued operation may remove the agent, creating the possibility of re-ignition, but not with **Fireboy® AUTOMATIC SHUTDOWN SYSTEMS**. They respond automatically when a **Fireboy** system discharges. Available in three different model series, providing shutdown capability for up to eight different engines. All systems are solid state for greater reliability and come with an integrated alarm horn, charged/discharged lights, and an override switch for restart or control of auto shutdown.

P/N	DESCRIPTION
ES300001	Diesel Engine Shutdown, 12VDC, 3-Circuit
ES3000012432	Diesel Engine Shutdown, 24/32VDC, 3-Circuit
DDPE500001	Diesel Engine Shutdown, 12VDC, 5-Circuit
ES5000012432	Diesel Engine Shutdown, 24/32VDC, 5-Circuit
ES501501	Diesel Engine Shutdown w/ GM Engine Time Delay, 12VDC, 5-Circuit
DDPE800001	Diesel Engine Shutdown, 12VDC, 8-Circuit
DDPE8000012432	Diesel Engine Shutdown, 24/32VDC, 8-Circuit
DDPE801501	Diesel Engine Shutdown w/ GM Engine Time Delay, 12VDC, 8-Circuit
DDPE8015012432	Diesel Engine Shutdown w/ GM Engine Time Delay, 24/32VDC, 8-Circuit



ES300001, ES5000012432, DDPE801501





50ABCPAIL



50BCPAIL

RECHARGE CHEMICAL

Our **UNIVERSAL RECHARGE DRY CHEMICAL/POWDER** agents consist of a carefully controlled range of particle sizes of monoammonium phosphate, sodium bicarbonate, or potassium bicarbonate, blended with a flow-promoting and anti-caking chemical. The agents are formulated and manufactured for both long discharge range and smooth, uninterrupted flow. Each particle is also silicone coated to provide moisture repellency and minimum friction during discharge.

P/N	DESCRIPTION
50ABCPAIL	ABC Dry Chemical, 50 lbs
50BCPAIL	BC Dry Chemical, 50 lbs
50PKPAIL	Purple K Dry Chemical, 50 lbs
50DPAIL	Class D Dry Powder (Sodium Chloride), 50 lbs



50ABCULC

Our **UL CLASSIFIED UNIVERSAL DRY CHEMICAL** is ideal for use in many manufacturers' fire extinguishers, per NFPA 10. This dry chemical agent consists of a carefully controlled range of particle sizes blended with a flow-promoting and anti-caking chemical for smooth delivery. Each particle is also silicone coated for optimum moisture repellency and minimum friction during discharge.

P/N	DESCRIPTION
50ABCULC	UL Classified ABC Dry Chemical, 50 lbs

OEM DRY CHEMICAL available from select warehouses. Call your sales representative for availability.

P/N	DESCRIPTION
AX555	ABC "High Performance" Chemical, 45 lbs
AX550	Amerex ABC Dry Chemical, 50 lbs
AX512	Amerex BC Dry Chemical, 50 lbs
A53080	Ansul ABC Foray Dry Chemical, 45 lbs
A9336	Ansul Plus-Fifty C Dry Chemical
B18905	Badger ABC Dry Chemical, 50 lbs
B18903	Badger BC Dry Chemical, 50 lbs
24124B	Badger Class D Powder Recharge, 50 lbs
18907B	Badger Pk Dry Chemical, 50 lbs
BK61000	Buckeye ABC Dry Chemical, 50 lbs
BK61400	Buckeye BC Dry Chemical, 50 lbs
K806411	Kidde ABC Dry Chemical, 50 lbs
K804904	Kidde BC Dry Chemical, 50 lbs



AX555

OEM LIQUID CHEMICAL CHARGES for a wide variety of portable fire extinguisher types and models.

P/N	DESCRIPTION
AX506	Amerex Antifreeze Charge for 2½ gal Loaded Stream Extinguishers
AX534	Amerex FFFP Charge, 2 gal
504A	Amerex FFFP Premix Charge for 2½ gal Extg., 1.14lit Model 252
AX5302	Amerex Recharge for AX260, Pkg/2
AX660	Amerex Recharge for AX262, Pkg/2
502A	Amerex 2% AFFF Premix Charge for 2½ gal & 6lit Extg., 8½ oz Models 250, 250CG, 254
A430182	Ansul PRX Liquid for K-Guard & Piranha, 6lit (K01, K01-1)
A423320	Ansul PRX Liquid for K-Guard & Piranha, 5 gal (K01, K01-1)
A79372	Ansulex Chemical Agent for K-Guard, 3 gal (K01-2)
792B	Badger Antifreeze Charge for WP-61
AC100	Badger 6lit Recharge for WC100, Pkg/2
AC250	Badger 2½ gal Recharge for WC250
BK600872	Buckeye 6lit Recharge
PC300	Pyrochem Wet Chemical Recharge, 3 gal

SEE PAGE 304



AX506



AX5302



AX507

CORROSION INHIBITOR helps prevent internal corrosion in stainless steel pressurized water extinguishers.

P/N	DESCRIPTION
AX507	Pressurized Water Corrosion Inhibitor

